



INVESTMENT BASKETS

What are Investment Baskets?

Investment Baskets are portfolio of Stocks with the blend of thematic equities. Stock Picking is done with high quality Fundamental & Tactical Strategies.

A keen eye is also kept on the Socio-Economic factor & current affairs. Asset allocation is ideal because of a perfect combination of Large-Caps & Mid-Caps Stocks in the Baskets.

Each Basket differs in its philosophy, goals & offerings keeping in mind the current trend.

It is best suitable to invest in a thematic basket & take the advantage of the trend



Technical Baskets

- Technical baskets are momentum & theme based investment baskets with medium to short term investment horizon
- Stocks are screened on the basis of technical & derivative parameters, considering overall market momentum
- Quality stocks are picked by our technical research team & its been reviewed & rebalanced periodically
- Investment time frame of upto 15 days - 6 months

Fundamental Baskets

- Fundamental baskets are theme based investment baskets with medium to long term investment horizon
- Stocks are screened on the basis of growth, quality of business, past performance, management strength
- Quality stocks are picked by our research team & its been reviewed & rebalanced periodically
- Investment time frame of upto 1-3 years

Features of Investment Basket



**Dynamic Research
Based Stock Allocation**



**Power of
Discretion**



**No Lock-in
Period**



**Single Click
to Invest**



Periodic Review



**Live Performance
Tracking**

- **24X7 Live Tracking**
- **Zero Subscription Charges**
- **Online Execution**
- **Thematic Baskets Available**
- **Lower Investment Margins**
- **Periodic Review**



Our Investment Baskets are performing really well & are helping our clients earn suitable returns at utmost ease.



Our **TOP TECH PICKS** basket has delivered a whopping **77.23%*** returns.



Our **TOP CEMENT PICK** basket has delivered a whopping **58.01%*** returns.



Our **TOP PICK SPECIALITY CHEMICALS** basket has delivered a whopping **55.92%*** returns.

Our Baskets vs NIFTY



**TECH EDGE
BANKING BASKET** VS **NIFTY 50**

11.4%*

5.5%

returns of last 19 Trading days



**TECH EDGE :
MONSOON BASKET** VS **NIFTY 50**

11.36%*

3.38%

returns of last 13 Trading days

These baskets are currently available for your Investment



Trust pe Thrust



Rozana Essential



Mini Cement Pack



Ruff N Tuff



Earning Stars



Healing Health



Khet Khalihan



Tech Edge Unlockdown



Affordable Housing



Bond with the Best



Digital India



SUN se EARN



Home Angels



Potential PSU

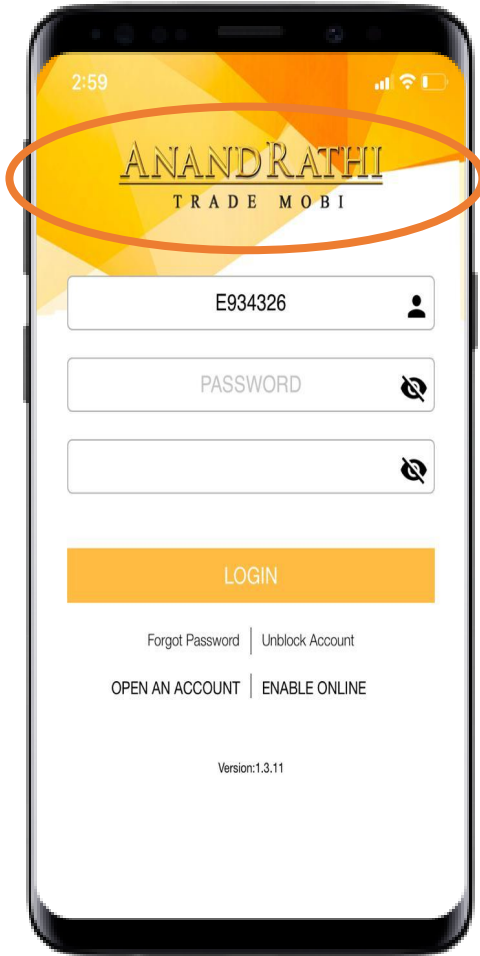


GARP Basket

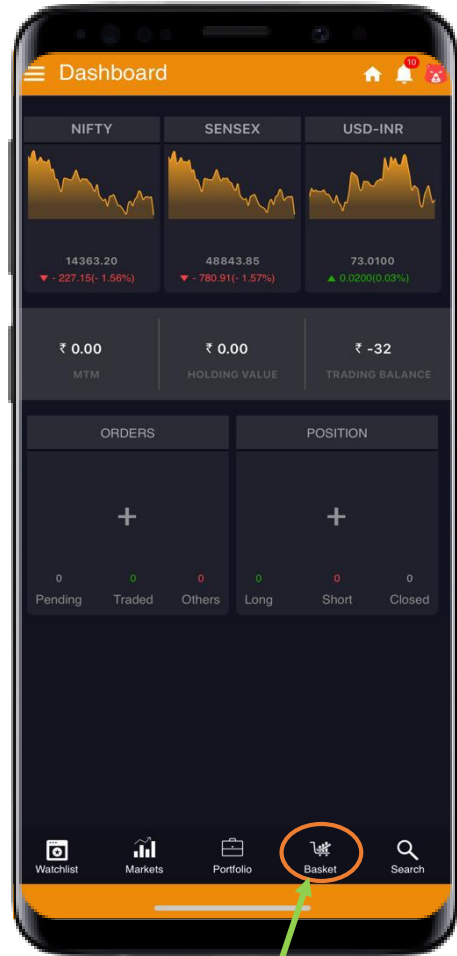


Alpha Tech

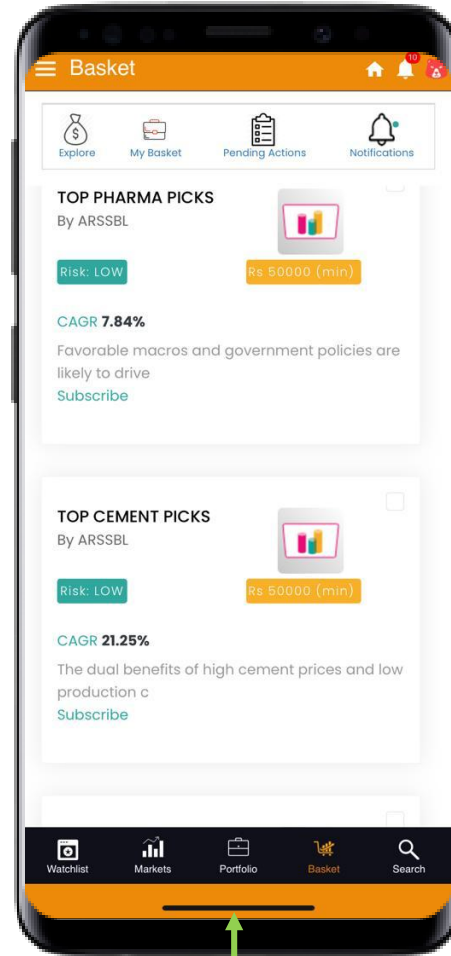
How to Subscribe?



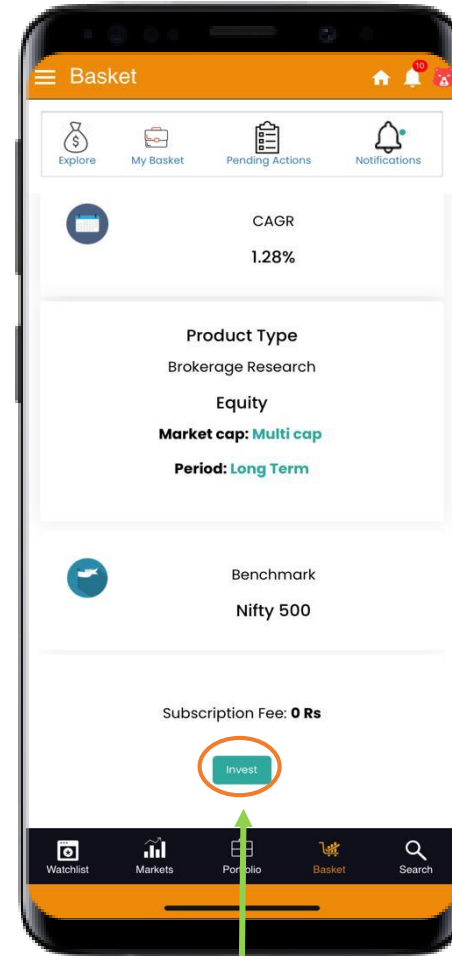
Download/Login to our Trademobi app



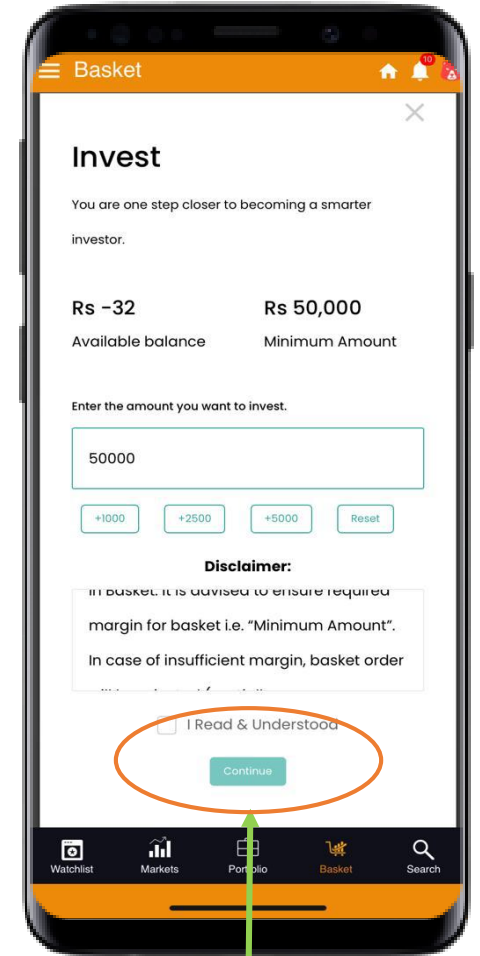
Click on the Basket Icon



Scroll for Available Baskets



Click on Invest Button



Click on T&C, & Continue with the Investment

To know more contact



privateclientgroup@rathi.com



022 6281 7000

Thank You

Anand Rathi Share and Stock Brokers Ltd.

Regd. Office: Express Zone, 10th Floor, A Wing, Western Express Highway, Goregaon (E), Mumbai - 400 063, Maharashtra. Tel: (022) 6281 7000.

Registration No.: INZ000170832 (BSE-949 | NSE-06769 | MSEI-1014 | MCX-56185 | NCDEX-1252), Research Analyst - INH000000834, Depository

Participant: CDSL & NSDL- (IN-DP-437-2019)| AMFI: ARN-4478 is Registered under “Anand Rathi Share & Stock Brokers Ltd.” **Analyst Certification:** The

views expressed in this Research Report accurately reflect the personal views of the analyst(s) about the subject securities or issuers and no part of the

compensation of the research analyst(s) was, is, or will be directly or indirectly related to the specific recommendations or views expressed by the research

analyst(s) in this report. The research analysts are bound by stringent internal regulations and also legal and statutory requirements of the Securities and

Exchange Board of India (hereinafter “SEBI”) and the analysts’ compensation are completely delinked from all the other companies and/or entities of Anand

Rathi, and have no bearing whatsoever on any recommendation that they have given in the Research Report.